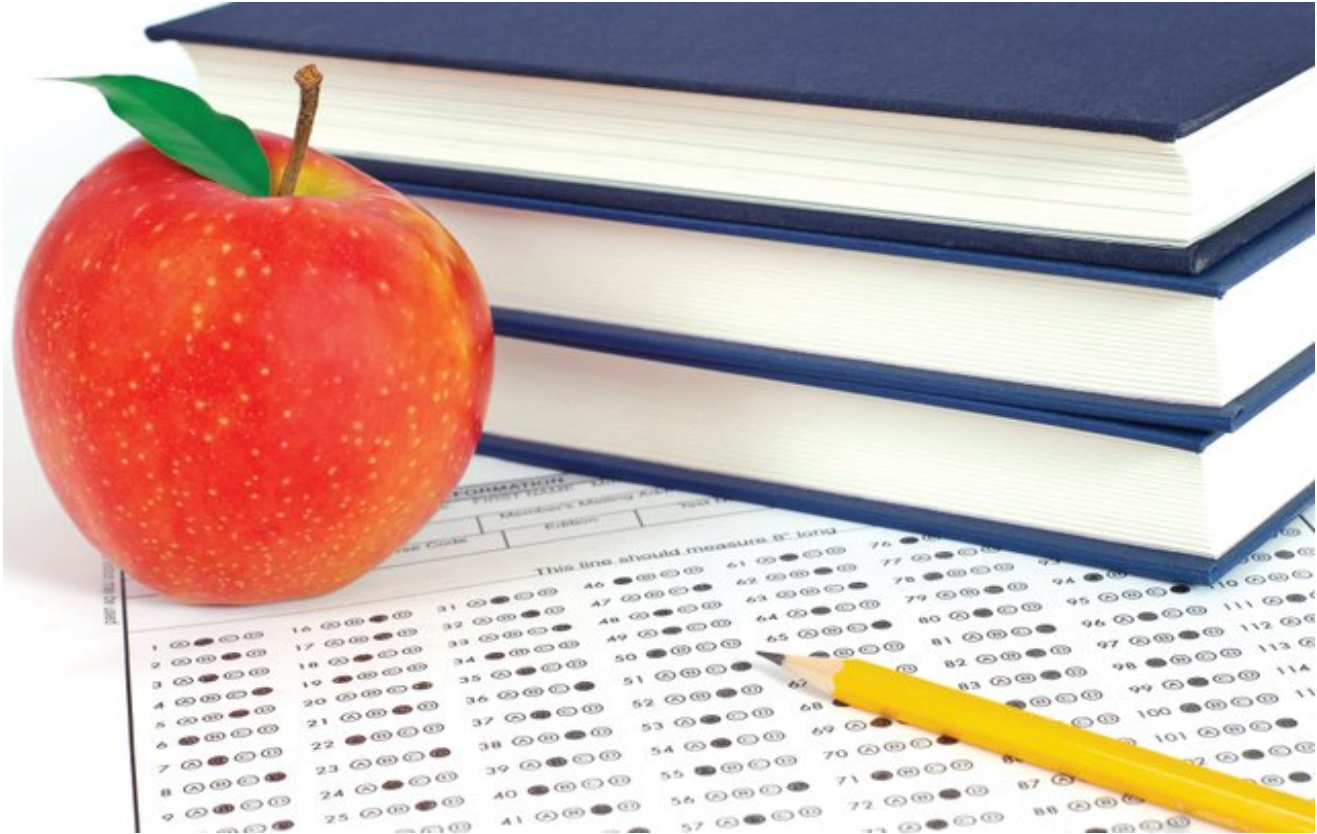




Teacher Pension Enhancement In Missouri: 1975 To The Present

Published on *Show-Me Institute* (<https://showmeinstitute.org>)



alt

This paper examines the history of benefit enhancements in Missouri's main teacher pension plan from 1975 to the present. The key organizing principle of this analysis is pension wealth, a standard measure, well established in the economics literature, which reflects both the size of an individual's annual pension as well as the number of years over which it is collected. Missouri repeatedly and considerably enhanced its pension benefit formula from 1975 to 2001, resulting in large increases in pension wealth, particularly for those retiring in their 50s with 25-30 years of service. Although many states have reduced benefits in recent years, especially for new teachers, this has not been the case in Missouri. Indeed, two enhancements that were scheduled to expire in 2013 were extended or made permanent.

Read the full case study:

Read More:

 [Download 21 Teacher Pension Enhancement In MO - Costrell.pdf](#) (1.15 MB)

Tags:

- [Public Employee Pensions](#)

About the Author



Robert Costrell

Read Online

<https://showmeinstitute.org/publication/accountability/teacher-pension-enhancement-missouri-1975-present>

Links

- [1] <https://showmeinstitute.org/publication/accountability/teacher-pension-enhancement-missouri-1975-present>
[2] <https://showmeinstitute.org/file/1228/download?token=3Sp92bt->
[3] <https://showmeinstitute.org/tags/public-employee-pensions>

Mission Statement

Advancing liberty with responsibility by promoting market solutions for Missouri public policy.

Show-Me Institute

5297 Washington Place 3645 Troost Avenue
Saint Louis, MO 63108 Kansas City, MO 64109
Phone: (314) 454-0647 Phone: (816) 287-0370
Fax: (314) 454-0667

Email: info@showmeinstitute.org

Support Our Work

The Show-Me Institute is a tax-exempt 501(c)(3) nonprofit organization. Make your tax deductible contribution today: <http://ShowMeInstitute.org/donate>